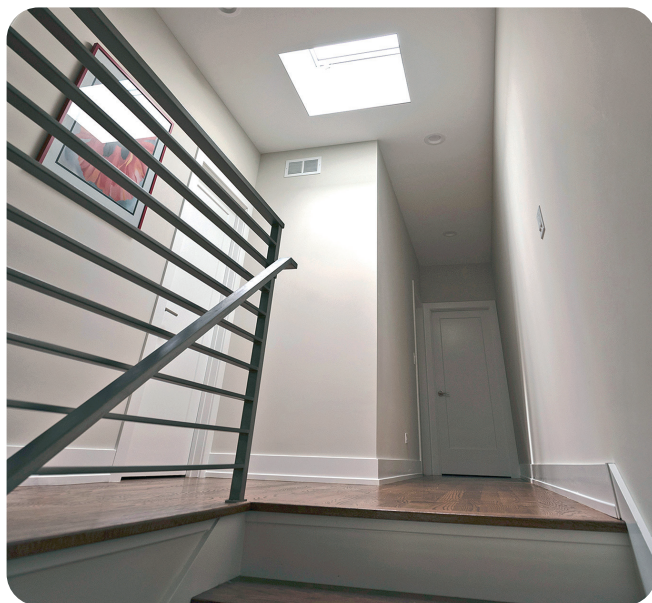


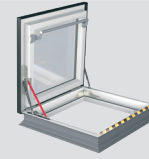
## TECHNICAL SPECIFICATION



### Features:

- suitable for roof pitches between 2-15 degrees
- sound reduction index  $R_w$  38 dB
- the DRF roof access skylight is an energy-efficient, DU6 glazing unit with a Class P2A anti-burglary inner pane and a window U-factor= 0.23 BTU/h ft<sup>2</sup>F
- range of internal and external accessories available

### Flat Roof Access Skylight DRF DU6



#### I. APPLICATION

Installation	required roof pitch 2° - 15°
	deck mounted

#### II. FEATURES

Frame structure	multi-chamber PVC profile insulated with polystyrene
Glazing	DU6 - triple pane passive glazing with warm spacers, argon gas and two low-E coatings. Tempered external and laminated internal glass.
Termination Bar	included aluminum profiles to secure roofing membrane into the skylight frame
Opening method	manually, up to an angle of 80°(30x30, 30x36, 36x36) and 60°(36x48, 48x48)
Warranty	5 years for skylights 20 years for laminated glass against hail (restrictions apply) 10 years for glass seal 2 years for gas springs
Door Hardware	gas springs to facilitate operation of the sash

#### III. TECHNICAL PARAMETERS

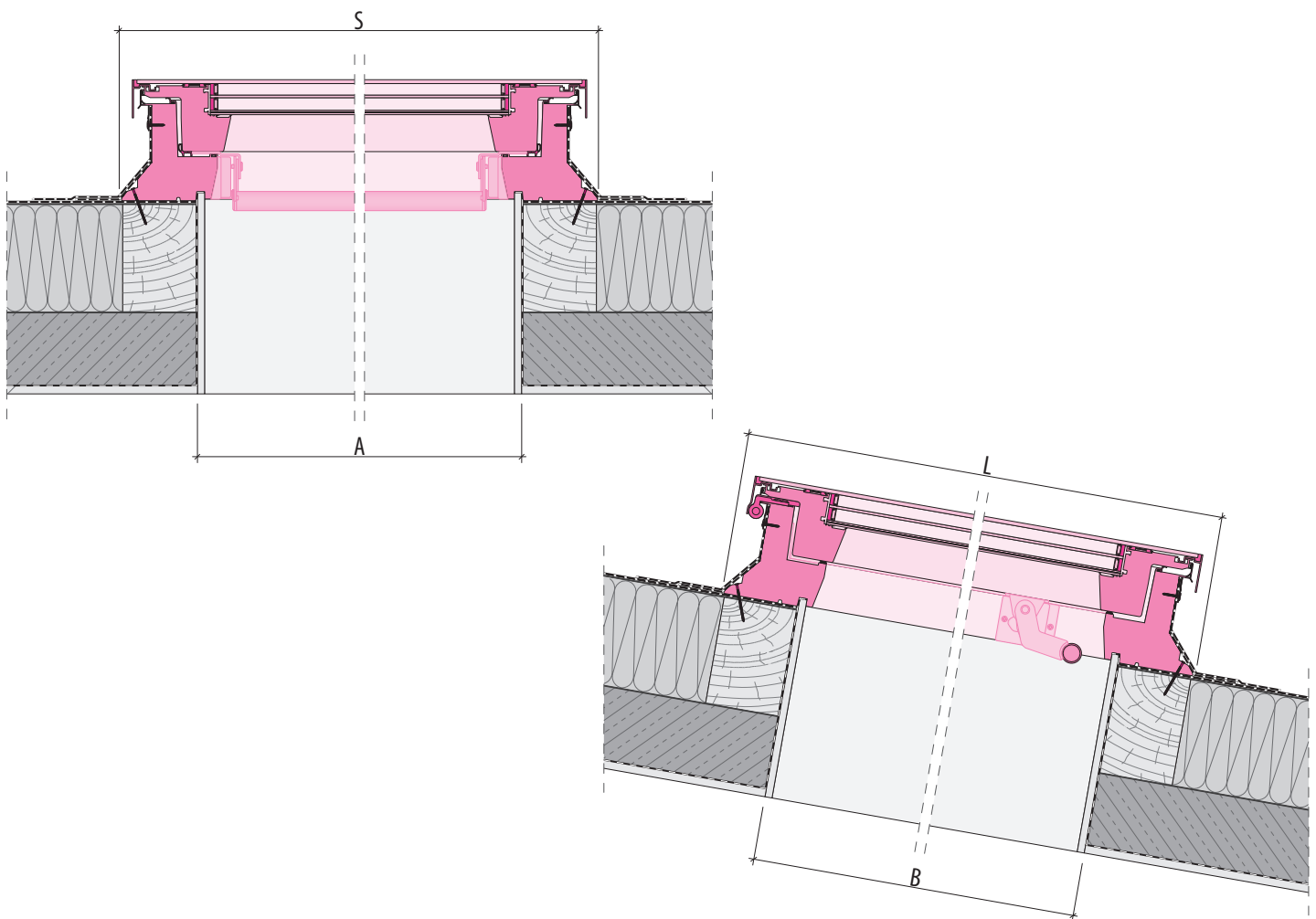
Technical parameters	Glazing unit type		
	Unit	DU6	Harmonised standards
U-factor for window	[BTU/h ft <sup>2</sup> F]	0.23	NFRC 100
U-factor for glazing unit	[BTU/h ft <sup>2</sup> F]	0.18	NFRC 100
SHGC		0.26	NFRC 200
Condensation resistance	-	70	NFRC 500
Visible transmittance	-	0.35	NFRC 200
UV protection	-	99.8	EN 410-2011
Impact resistance	Class 5 - 950 mm		EN 14351-1:2006+A2:2016
Positive design pressure (DP)	3600 Pa (~75.19 psf)		NAFS 2011 / NAFS 2017
Negative design pressure (DP)	-3600 Pa (~-75.19 psf)		
Water penetration resistance test pressure	720 Pa (~15.04 psf)		
Canadian air infiltration/ exfiltration level	A3 Level (NAFS-11)/ A3 Level (NAFS-17)		

#### IV. OPTIONAL ACCESSORIES

Mounting accessories	- the XRD/W installation base allows raising the access roof light above the roof by 6". Maximum 3 bases can be joined.
External accessories	- AMZ/F Solar awning blind
Internal accessories	- ARF/D - APF/D pleated blinds

V. DIMENSIONS

Size		30" x 30"	30" x 36"	36" x 36"	36" x 48"	48" x 48"
Rough opening (AxB)	in.	29 <sup>7</sup> / <sub>8</sub> x 29 <sup>7</sup> / <sub>8</sub>	29 <sup>7</sup> / <sub>8</sub> x 34 <sup>3</sup> / <sub>4</sub>	34 <sup>3</sup> / <sub>4</sub> x 34 <sup>3</sup> / <sub>4</sub>	34 <sup>3</sup> / <sub>4</sub> x 46 <sup>5</sup> / <sub>8</sub>	46 <sup>5</sup> / <sub>8</sub> x 46 <sup>5</sup> / <sub>8</sub>
Outside frame (SxL)	in.	39 <sup>1</sup> / <sub>4</sub> x 39 <sup>1</sup> / <sub>4</sub>	39 <sup>1</sup> / <sub>4</sub> x 44 <sup>1</sup> / <sub>8</sub>	44 <sup>1</sup> / <sub>8</sub> x 44 <sup>1</sup> / <sub>8</sub>	44 <sup>1</sup> / <sub>8</sub> x 55 <sup>7</sup> / <sub>8</sub>	55 <sup>7</sup> / <sub>8</sub> x 55 <sup>7</sup> / <sub>8</sub>



FAKRO America LLC  
39 W. Factory Road, Addison, IL  
Ph: 630-543-1010 / office@fakrousa.com